



**ISTRUZIONI DI MONTAGGIO
PROTEZIONI CARTER
CM052 SX**

**INSTRUCTION FOR ASSEMBLY
CRANKCASE PROTECTORS
CM052 SX**

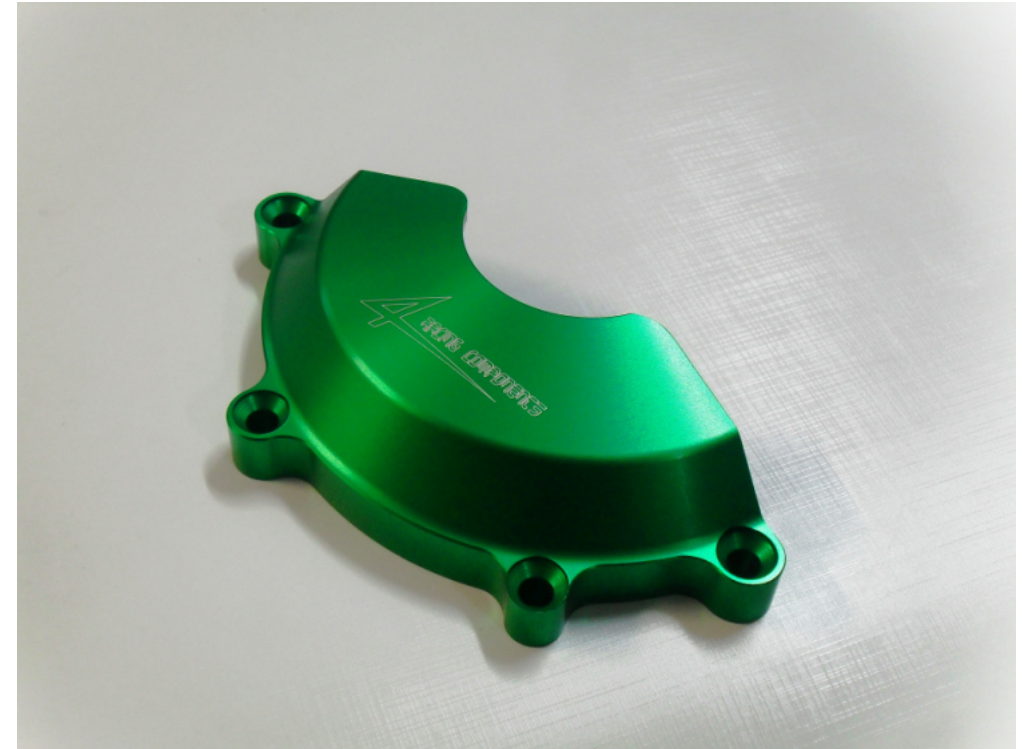


Via Lavino 209/C - 40050 Monte San Pietro (BO) - Italy
Ph. +39.051.67.62.200 - Fax +39.051.67.62.202
www-for-racing.com
info@for-racing.com

WWW.FOR-RACING.COM



**Dopo aver rimosso le viti originali, applicate il copri carter 4racing usando le viti in date dotazione
Assicurarsi che le viti siano strette bene.**



**After removing the original screws, attach the cover 4racing housing using the screws supplied dates
Make sure the screws are stood well**

Ensure that all of the screws are completely tightened

 **ATTENZIONE**

Tutti i prodotti For Racing sono realizzati per uso esclusivamente agonistico ed in circuito chiuso, vietato l'uso su strade pubbliche.

 **ATTENTION**

All For Racing parts are intended for exclusive racing use on closet tracks. Their use on public highways and roads may be forbidden